

Steps for Research Personnel to complete their certification and COI disclosure.

eProtocol website! You can access eProtocol at <http://research.wayne.edu/ep/index.php>

Please make sure you use one of the supported browsers:



eProtocol » Investigator » Home

Investigator Dashboard – Click the [Protocol ID](#)

Create Protocol Clone Protocol Delete Protocol

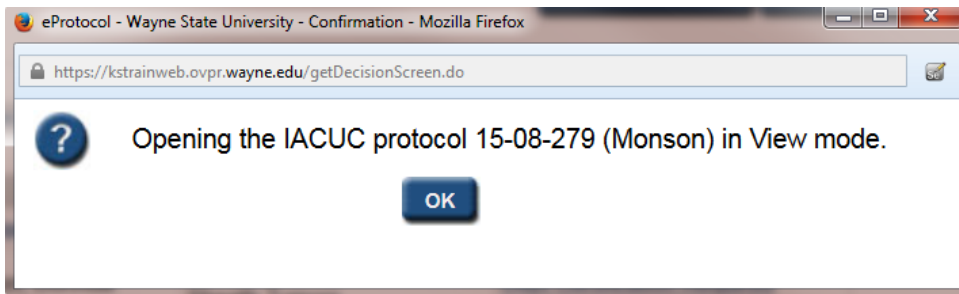
IACUC

Protocols (In Preparation / Submitted)

NEW

Protocol ID	Principal Investigator	Title	Protocol Event	Panel	Meeting Date
15-08-279	Monson, Dorinda	Malignant Peripheral Nerve Sheath Tumors	Dept Certification Required		

Based on your role on the protocol, you will have the option to open in **View** or **Edit** mode. If Edit mode is an option select edit, otherwise you will be directed to open the protocol in view mode.



IACUC - IACUC Protocol ID: 15-08-279 (Monson, Dorinda)
Protocol Title: Malignant Peripheral Nerve Sheath Tumors

Save | Spell Check | Help | Close

Previous Next

Personnel Information

- Species
- General Questions
- Are you using?
- Funding
- Protocol Information
- Guidelines
- Training Checklist
- Certifications**
- COI Disclosure

Principal Investigator

Name	Degree
Monson, Dorinda	
University Title	WSU Access ID
AssocDir, RCR	au8657
Department	Division
Human & Animal Research Compliance	
Office Address	Office Phone
	+1 313-577-0967
E-mail Address	Laboratory Phone

Previous Next

Personnel Information

Species

General Questions

Are you using?

Funding

Protocol Information

Guidelines

Training Checklist

Certifications

COI Disclosure

Print View

Event History

Certification

As principal investigator I certify the following:

1. My staff and I will comply with all standards for animal care and investigation established in the [Guide for the Care and Use of Laboratory Animals \(the Guide, NRC 2011\)](#) and the [Federal Animal Welfare Act](#), and will follow all policies established by the University to assure that these standards are met.
2. I assume responsibility for the work described here.
3. All individuals working with the animals on this protocol are qualified by virtue of training or experience to perform proper handling, experimental, and restraint techniques required for the species to be used.
4. I recognize my responsibility to identify occupational health hazards related to this protocol including identifying hazards, providing the necessary training for those involved, and supplying the appropriate protective clothing and equipment to minimize the risks.
5. This research does not represent unnecessary duplication of previous experiments.
6. I realize that failure to adhere to policies related to animal care and use may result in suspension or revocation of permission to perform animal research in Wayne State University facilities.

For additional requirements and expectations please review and affirm the [Principal Investigator Responsibilities Guideline](#).

Monson, Dorinda

I have read this protocol, understand my role in the project, and will comply with all standards for animal care and investigation established in the Guide for the Care and Use of Laboratory Animals (the Guide, NRC 2011) and the Federal Animal Welfare Act, and will follow all policies established by the University to assure that these standards are met.

Wildt, Larry

IACUC - IACUC Protocol ID: 15-08-279 (Monson, Dorinda)

Protocol Title: Malignant Peripheral Nerve Sheath Tumors

Save | Spell Check | Help | Close

Previous Next

Personnel Information

Species

General Questions

Are you using?

Funding

Protocol Information

Guidelines

Training Checklist

Certifications

COI Disclosure

Print View

Event History

CONFLICT OF INTEREST DISCLOSURE

Endorsements and Financial Conflict of Interest Disclosure:

Objectivity in research is a key component of any research project. One method for maintaining objectivity is to have all individuals involved in research design, development, or data evaluation/analysis disclose any potential and/or real financial conflict of interest. This includes all personnel listed on the protocol.

Note that you are being asked about all financial interests related to your responsibilities at WSU or its affiliates, not just the financial interests that may be related the funded project.

Examples of relevant relationships for potential conflict of interest include but are not limited to:

1. Receiving past, current, or expecting future income in the form of salary, stock or stock options/warranties, equity, dividends, royalties, profit sharing, capital gain, forbearance or forgiveness of a loan, interest in real or personal property, or involvement in a legal partnership with the sponsor;
2. Receiving past, current, or expecting future income in the form of consulting fees, honoraria, gifts, gifts to the University, or payments resulting from seminars, lectures, or teaching engagements, or service on a non-federal advisory committee or review panel;
3. Serving in a corporate or for-profit leadership position, such as executive officer, board member, fundraising officer, agent, member of a scientific advisory board, member of a scientific review committee, or member of a data safety monitoring committee, regardless of compensation;
4. Inventor on a patent or copyright involving technology/processes/products licensed or expected to be licensed to the sponsor.

Monson, Dorinda
Do you, your spouse or domestic partner, or any of your dependent children have a potential conflict of interest with the sponsor of this project? Yes No

Borovicka, Ginette
Do you, your spouse or domestic partner, or any of your dependent children have a potential conflict of interest with the sponsor of this project? Yes No

Wildt, Larry
Do you, your spouse or domestic partner, or any of your dependent children have a potential conflict of interest with the sponsor of this project? Yes No

If yes, A "Financial Conflict of Interest Detailed Disclosure Form" must be filed with the Financial

When you are finished scroll to the top and click "Save" and then "Close".

